

# OLIVER

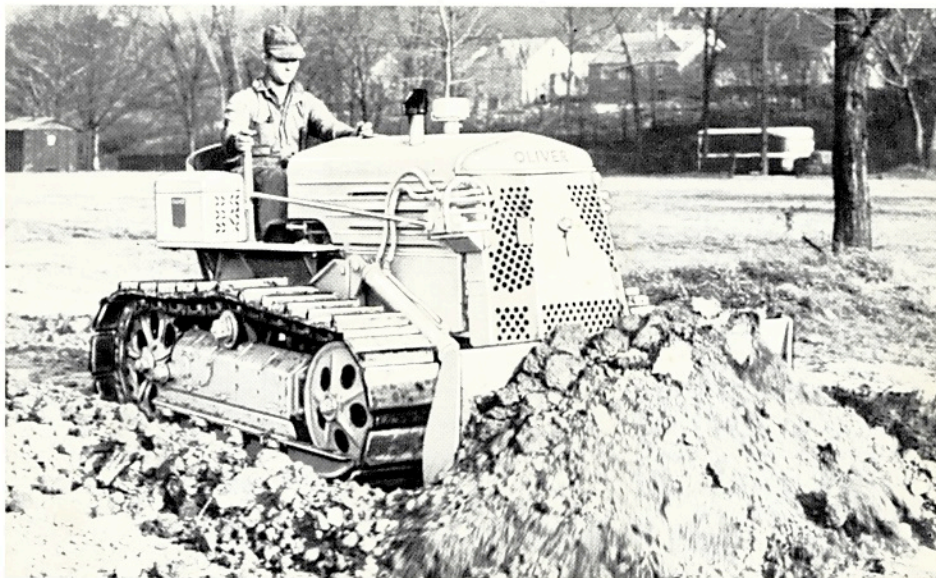
## Model "A" Crawler Tractor



**STURDY CONSTRUCTION . . . POSITIVE TRACTION . . . ECONOMICAL OPERATION**

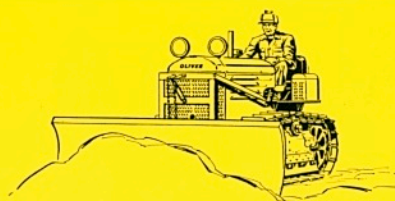
The Oliver Model "A," like all Oliver crawlers, features the exclusive Differential Steering principle that *keeps* power on both tracks at all times, even on turns. Steering is the same uphill, downhill, pushing or pulling. You always get full traction for more positive control and bigger work loads. The Oliver Model "A" features also, a protected high clearance that permits work in mud, snow and sticky going that would quickly mire down ordinary crawlers.

In the 30 drawbar h.p. class, the Model "A" is a nimble, hard-working crawler that stays on the job with low maintenance and fuel costs. The Model "A" is available in gasoline or diesel models and is adaptable to a variety of useful attachments.



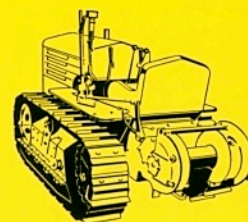
**Model "A" with Logging Sulky**

—a tough, hard-working team with plenty of power for getting out the big logs. Protected high clearance and differential steering give unequal maneuverability.



**Model "A" with Snow Plow**

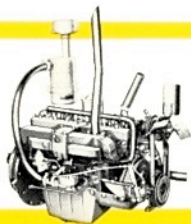
—clears roads, streets, ramps . . . quickly and efficiently. Useful in many smaller clearing operations, too. Plow is easy to attach, simple to operate.



**Model "A" with Winch**

—known for its dependability in the logging industry, this sturdy unit is ideal for winch work. Rugged and powerful, it takes the tough jobs in stride.

### TWO POWERFUL ENGINES



**GASOLINE**

6 cylinders, delivers 30.6 h.p. at the drawbar.



**DIESEL**

4 cylinders, delivers 30.5 h.p. at the drawbar.

### TWO TRACTOR WIDTHS



**STANDARD MODEL**

with 42-inch track centers.



**WIDE GAUGE MODEL**

with 50-inch track centers.

# OLIVER MODEL "A" CRAWLER SPECIFICATIONS

Gasoline and Diesel Models (Subject to change without notice)

DETAIL	AG-6 Gasoline	AD Diesel
<b>ENGINE</b>		
Maximum Drawbar H.P. Corrected to Sea Level, as established by manufacturers' tests.	30.6	30.5
N.A.C.C. Rating—For Tax Purposes	26.33	25.6
Drawbar Pounds Pull (at rated engine speed)†		
1st Gear	6,020	6,500
2nd Gear	4,160	4,520
3rd Gear	2,640	2,800
Still greater drawbar pull will result at lower engine speeds. Oliver engines develop much higher torque when slowed down due to overload:		
Drawbar Pounds Pull†		
1st Gear	6,662	7,048
2nd Gear	4,604	4,901
3rd Gear	2,922	3,036
Maximum Belt H.P. Corrected to Sea Level†	38.8	38.0
Bore and Stroke	3 <sup>3</sup> / <sub>16</sub> " x 4 <sup>3</sup> / <sub>8</sub> "	4" x 4 <sup>1</sup> / <sub>2</sub> "
Number of Cylinders	6	4
R.P.M.	1,530	1,530
Piston Displacement in Cu. Inches	226	226.2
Piston Displacement in Cu. Ft. per Min.	200	200
Crankcase Oil Capacity Gallons	2	3 <sup>1</sup> / <sub>4</sub>
Cooling System Capacity Gallons	5	5 <sup>1</sup> / <sub>2</sub>
Fan Diameter	18"	18"
Fuel	Gasoline	(Std. Diesel)
Fuel Tank Capacity—Gallons	18	18
Ignition	Magneto or Battery	
Starting	Manual(*)	Electric
Diameter of Crankshaft	2 <sup>1</sup> / <sub>16</sub> "	3"
Number of Main Bearings	4	5
Make of Engine	Continental	Hercules

## TRANSMISSION AND STEERING

Engine Clutch Size	9 <sup>3</sup> / <sub>4</sub> " Double Plate	9 <sup>3</sup> / <sub>4</sub> " Double Plate
Transmission Case Oil Capacity—Gallons(**)	8	8
Transmission Oil Pump Type	Plunger	Plunger
Speeds—M.P.H.—Low	1.78	1.78
2nd	2.62	2.62
High	3.74	3.74
Rev.	1.36	1.36
Ratio of Engine to Sprocket R.P.M.—Low	56.52	56.52
2nd	38.67	38.67
High	27.03	27.03
Steering Band Width	2"	2"
Steering Bands—Total Area—Sq. In.	143	143

DETAIL	AG-6 Gasoline	AGH-6 Hillside	AD Diesel	ADH Hillside
<b>TRACK AND TRACK FRAME</b>				
Diameter of Track Frame Shaft	2 <sup>3</sup> / <sub>4</sub> "		2 <sup>3</sup> / <sub>4</sub> "	
Length of Track Frame Shaft	58"	66"	58"	66"
Size Bushing Track Frame Shaft—2 each Frame	2 <sup>3</sup> / <sub>8</sub> " x 2 <sup>3</sup> / <sub>4</sub> "		2 <sup>3</sup> / <sub>8</sub> " x 2 <sup>3</sup> / <sub>4</sub> "	
Number Lower Track Wheels each Frame	4		4	
Track Shoe Length—Center to Center of Pins	6 <sup>3</sup> / <sub>4</sub> "		6 <sup>3</sup> / <sub>4</sub> "	
Track Shoe Width—Standard	12"	12"	12"	12"
Special Width Plate Available	14"	14"-16" 18"-20"	14"	14"-16" 18"-20"
Special Width Grouser Available		14"-16" Combination		14"-16" Combination
Length Track on Ground	62"		62"	
Total Ground Contact Area Square Inches	1488		1488	
Size Grouser Bolts (2 Bolts per Rail)	5/8"		5/8"	
Size Track Pin	1 <sup>1</sup> / <sub>2</sub> " x 7 <sup>1</sup> / <sub>8</sub> "		1 <sup>1</sup> / <sub>2</sub> " x 7 <sup>1</sup> / <sub>8</sub> "	
Size Track Bushings	1 <sup>1</sup> / <sub>2</sub> " x 4 <sup>7</sup> / <sub>8</sub> "		1 <sup>1</sup> / <sub>2</sub> " x 4 <sup>7</sup> / <sub>8</sub> "	
Size Track Roller	2 <sup>1</sup> / <sub>4</sub> " x 2 <sup>7</sup> / <sub>8</sub> "		2 <sup>1</sup> / <sub>4</sub> " x 2 <sup>7</sup> / <sub>8</sub> "	
Number of Shoes per Track	29		29	

## DRAWBAR

Height above Grouser Tip	14 <sup>3</sup> / <sub>4</sub> "		14 <sup>3</sup> / <sub>4</sub> "	
Width of Drawbar Opening	2 <sup>1</sup> / <sub>4</sub> "		2 <sup>1</sup> / <sub>4</sub> "	
Lateral Movement Right or Left of Center	10 <sup>1</sup> / <sub>2</sub> "		10 <sup>1</sup> / <sub>2</sub> "	
Diameter Drawbar Pin	1"		1"	

## DIMENSIONS

Length Overall (without crank)	103 <sup>1</sup> / <sub>2</sub> "		101 <sup>1</sup> / <sub>2</sub> "	
Width Overall	58"	66"	58"	66"
Height at Dash	54"		54"	
Ground Clearance with Grousers	13 <sup>1</sup> / <sub>2</sub> "		13 <sup>1</sup> / <sub>2</sub> "	
Center to Center of Track (Gauge)	42"	50"	42"	50"

## WEIGHT

Pounds (Approx.) Shipping	7086	7263	7662	7903
Pounds (Approx.) Operating	7411	7588	8012	8253
Ground Pressure—Pounds per Sq. Inch	4.98	5.10	5.38	5.55

## POWER TAKE-OFFS—Special Equipment for All Models

Type	Engine R.P.M.	P.T.O. R.P.M.	Spline A.S.A.E.	Pulley R.P.M.	Pulley Dia. x Face	Belt Speed Ft. Per Min.
Industrial Straight P.T.O.	1530	904	1 <sup>3</sup> / <sub>8</sub> -6B			
Indust. P.T.O. and Power Pulley Comb.	1530	904	1 <sup>3</sup> / <sub>8</sub> -6B	1130	10 <sup>1</sup> / <sub>2</sub> x 8 <sup>1</sup> / <sub>2</sub>	3105
Industrial P.T.O.	1530	517	1 <sup>3</sup> / <sub>8</sub> -6B			
Agricultural P.T.O.	1530	603	1 <sup>3</sup> / <sub>8</sub> -6B			

Additional Power Take-off speed combinations available.

(\*\*)Includes Oil Capacity of Transmission Controlled Differential and Final Drive Compartments.

(\*)Electric Starting at additional cost.

†As established by manufacturers' tests.